



Textile  
Exchange

# Introduction to Membership

---



Founded in 2002, Textile Exchange is a global non-profit 501(c)3 with more than 850 members representing leading brands, retailers, and suppliers in the textile industry. The organization works to create leaders in the responsible fiber and materials sector by providing learning opportunities, tools, insight, standards, data, measurement, and benchmarking; and by building a community that can collectively accomplish what no individual or company can do alone.

### **Vision**

We envision an enriching global fashion, textile, and apparel industry that protects people and planet by positively impacting climate, soil health, water, and biodiversity.

### **Mission**

Textile Exchange inspires and equips people to accelerate the adoption of preferred materials through clear and actionable guidance. We convene the fashion, textile, and apparel industry to collectively achieve climate reduction goals and holistic positive impacts across fiber and raw material production.



“With buy-ins from Industry leaders like H&M, Inditex, Nike, and Lenzing, Textile Exchange’s membership reads like a who’s who of the Garment and Textile Industry.” - *Sourcing Journal*



# Climate+

For years, Textile Exchange has promoted practices, standards, and resources that benefit the climate.

Under the Climate+ strategic direction, Textile Exchange will be the driving force for urgent climate action with a goal of **45% reduction in greenhouse gas emissions within fiber and raw material production**

The + in Climate+ represents the interconnected pillars that constitute Climate; water, biodiversity, and soil health.

The + also represents partnership - the collaborative mentality needed to accomplish this goal.

Achieving the 2030 Strategy: The Climate+ goal will require strong partnerships to accelerate the adoption of existing tools as well as enable disruptive innovation around new business models and zero-carbon materials.

Learn more at: [TextileExchange.org/2030-climate-plus](https://TextileExchange.org/2030-climate-plus)



# The Value of Membership

Join more than 850 like-minded members in delivering the Climate+ goals.

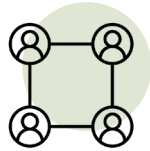
Textile Exchange empowers its members to navigate the complexities of the textile industry. Regardless of where you are in your sustainability journey, Textile Exchange membership will equip you with data, tools, and, most importantly, the community necessary to achieve the 45% reduction in greenhouse gas emissions within fiber and raw material production.

As a global non-profit, our suite of resources focuses on minimizing the harmful impacts of the textile industry and maximizing its positive effects. Since 2002, we have helped establish best practices and fair business models for the entire supply network from farm to retail.

United by our Climate+ Strategy, our members connect, collaborate, and accelerate the rapid adoption of preferred materials for the textile industry.

All that is missing to reach this goal is your voice  
*- join us today.*





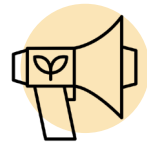
## Unlock the Power of Community

Connect. Collaborate. Accelerate. Join a community that can collectively accomplish what no individual or company can do alone. Gain access to our membership community portal – The Hub.



## Access to Expertise

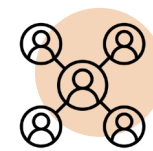
Dedicated support from Textile Exchange's staff (865 years of combined experience) via The Hub. Individual team access and virtual training for our Partner-Level members.



## Show Leadership and Gain Exposure

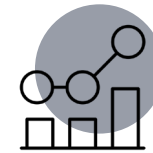
All members are listed on our website and announced on The Hub. They may also be recognized in our external communications, through which we share industry expertise and best practices within our community.

We invite you to keep us informed about your latest work and projects for consideration as part of our evolving content offering, including videos, reports, interviews, and case studies.



## Convene and Connect

Expand your organization's network through our member-only online community portal The Hub, exclusive members-only events, webinars, and publications. Benefits include tickets (or discounted price tickets) to our annual conference, depending on the level of membership.



## Develop, Measure, and Track Progress to a Preferred Fiber Strategy

Demonstrate progress and industry leadership towards achieving the Climate+ goals. All members participating in the Materials Benchmark have access to an Advanced Scorecard.

## Membership Levels (based on annual sales volume)



### Partner - \$12,500 / year

We welcome brands, retailers, suppliers, and manufacturers generating over \$25 million in annual sales.

#### Value of Member Benefits >\$15,000

- Annual Conference Tickets - 3 In-Person, 2 Virtual (Value \$8,200) + 25% discount on additional tickets
- Access to our range of 49 Material Summary publications (Value \$2,450)
- Materials Benchmark Advanced Scorecard (Value \$3,000)
- Member-only training on Preferred Fibers or Standards (Value \$1,500)
- Additional benefit for Supplier Partners only: Exhibit space at the annual Textile Sustainability Conference (Value \$3,500)



### Supporter - \$3,000 / year

We welcome brands, retailers, suppliers, and manufacturers generating between \$5 and \$25 million in annual sales.

#### Value of Member Benefits >\$9,600

- Annual Conference Tickets - 1 in-person/2 virtual (Value \$4,200) + 25% discount on additional tickets.
- Access to our range of 49 Material Summary publications (Value \$2,450)
- Materials Benchmark Advanced Scorecard (Value \$3,000)



### Friend - \$500 / year

Reserved for small to medium-sized enterprises that generate under \$5 million in annual revenue. Contact [membership@textileexchange.org](mailto:membership@textileexchange.org) for approval.

#### Value of Member Benefits >\$3,500

- Annual Conference Tickets - 25% discount, (Value \$500)
- Materials Benchmark Advanced Scorecard (Value \$3,000)

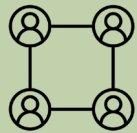


Open-source access to the following programs and publications, funded by membership fees:



**Benchmarking:**

Members are entitled to an advanced scorecard, including gap analysis and impact dashboard.



**Round Tables:**

Join fiber-specific quarterly video calls and access the respective communities via The Hub.



**Learning Center:**

Download reports, and stream public-facing webinars.

INTRODUCTION TO MEMBERSHIP		MEMBER BENEFITS		Partner	Supporter	Friend
<i>Annual dues renew on a rolling basis.</i>				\$12,500	\$3,000	\$500
Unlock the Power of Community	Unlimited access to our member portal, The Hub	No limit to the number of subscribers from your organization		No limit to the number of subscribers from your organization	No limit to the number of subscribers from your organization	No limit to the number of subscribers from your organization
	Annual conference tickets	3 in-person, 2 virtual (value: \$8,200) + 25% discount on additional tickets		1 in-person, 2 virtual (value: \$4,200) + 25% discount on additional tickets	25% discount (value: \$500)	
	Annual conference member-only event	No limit to the number of attendees from your organization		No limit to the number of attendees from your organization	No limit to the number of attendees from your organization	No limit to the number of attendees from your organization
	Exhibit space at our annual conference*	For Suppliers (value: \$3,500)		—	—	
	Invitations to regional events	✓		✓	✓	
	Job listings on The Hub and Textile Exchange's Job Zone	✓		✓	✓	
Education and Guidance	Annual conference recordings	✓		✓	✓	
	Material Summaries library	Value: \$2,450		Value: \$2,450	Available for purchase	
	Member-only webinars and report briefs	✓		✓	✓	
	Member only trainings on preferred fibers or standards	Value: \$1,500		—	—	
	One on one support from Textile Exchange team experts – subject to availability	✓		Served via The Hub, member portal	Served via The Hub, member portal	
	Materials Benchmark Advanced Scorecard	Value: \$3,000		Value: \$3,000	Value: \$3,000	
Recognition	Link to corporate URL listed on our website	✓		✓	✓	
	Acknowledgement of Membership	✓		✓	✓	
	Priority for inclusion in the conference agenda	✓		✓	✓	
<i>*Suppliers and manufacturers receive exhibit space at our annual conference</i>		Total Value:		Brands/Retailers >\$15,000	Suppliers >\$18,000*	>\$9,600
						>\$3,500







# Contact us:

[membership@textileexchange.org](mailto:membership@textileexchange.org)